



Delburn Wind Farm - CCC Meeting #11

21 August 2025

Procedural Matters



- Acknowledgment of Traditional Owners
- Welcome & apologies
- Actions from previous meeting
- Conflicts of interest

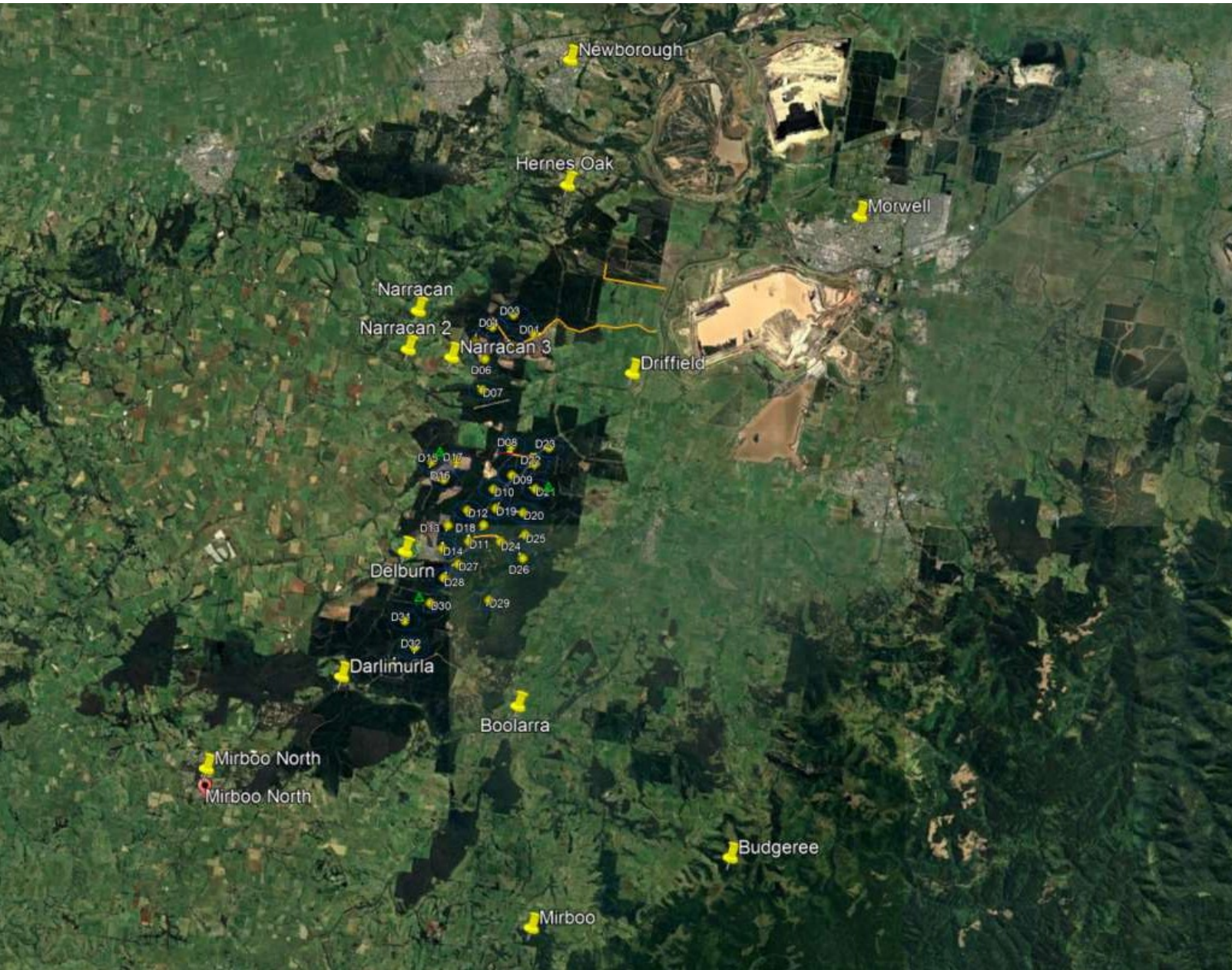


CCC Membership Overview



- Promotion for new members
- Looking for more members from Thorpdale & Yinnar
- Recommendations





Current CCC Member Locations

Community Feedback & Questions



- Questions
- Concerns
- Observations
- Suggestions



Local Government Payments in Lieu of Rates



- What it is
- How it works
- Rules?
- Timeframes



Project Update



Next Meeting



- Proposed Thursday 23 October 2025
- Daylight Savings hybrid or face to face

Anne Forbes

Communications and Engagement Manager

OSMI Australia

anneforbes@osmi.com.au

1800 676 428



Delburn Wind Farm Community Consultative Committee Minutes Meeting #11

Thursday 21 August 2025

6:00 - 6.45pm

Online meeting

Attendees:

- | | |
|------------------|----------------------------------|
| • Sam Maynard | • Michelle Slater |
| • Lorraine Bull | • Tony Wolfe |
| • Trevor Hoare | • Michelle Slater |
| • Karen Pedretti | • Barry Rogers (Chair) |
| • Graeme Wilson | • Anne Forbes (Secretariat OSMI) |
| • Chris Milne | • Elizabeth Radcliffe (OSMI) |

Apologies: Ivor Awty, Wendy Farmer, Matt Curtain, Marty Sinemma, Alex Godina (Cubico)

Minutes

1. Procedural Matters & Governance

- (Chair) Acknowledgement of Traditional Owners
- Barry Rogers welcomed a new CCC member, Karen Pedretti who lives in Hernes Oak
- Actions arising from previous meeting: CCC members will go on a site tour of the Bald Hills Wind Farm when the weather improves
- Previous meeting minutes: Confirmed as true and correct
- Conflicts/perceived conflicts of interest: Elizabeth Radcliffe advised she has just been appointed to the Regional Development Australia Gippsland Committee.

2. CCC Membership Overview

Community members were invited to join the CCC as we hope to get more members from Thorpdale and Yinnar. We want a good representation of people around the wind farm site. In addition to Karen, we have two other members who have expressed an interest in joining.

3. Community Feedback and Questions

The CCC members shared questions, concerns and feedback received from community members:

- A few members noted there was not much community discussion occurring about the project.
- A question was asked if additional access entries would be put in along the Strzelecki Highway, Delburn near the new passing lane into the HVP site. No new road entry points will be put into access the HVP sites only the existing road entry points will be used.
- One member said community members attending a market in Moe inquired if the DWF was still going ahead.
- A few farmers in Driffield are interested in the Victorian Transmission Plan and wanted to know

if any additional lines would be installed nearby.

3. Project Update

We have been investigating which port the turbine components will come into. This is an involved process to look at the infrastructure access to the port, the road access for over dimensional components from the port to the site and options for storage of the turbines until they are required.

The port options include Hastings Port, Port Anthony, Port of Geelong, and the Port of Eden. We need to consider customs requirements, economics, depth of the shipping channels and road transport from port to site. Some ports have already been ruled out due to physical constraints, current availability, roads access, shipping levels and drafts. We expect a decision on the final port solution soon.

We continue working on the secondary consent compliance plans with CFA and other stakeholders. This includes meeting with representatives of the Department of Transport to discuss road access from the ports to the wind farm site. The compliance reports are then submitted to the responsible authority for approval.

We expect to appoint the lead civil engineering contractor shortly and will work with them on responsibilities and compliance obligations including construction environment management plans, traffic management plans and emergency management planning. This work continues alongside the contract negotiations with the principal contractor/turbine manufacturer. We are committed to having the compliance and contracts signed before the end of the year, so the final investment decision can be made.

CCC members asked the following questions:

Q: What is the size of the turbines in megawatts?

A: 6.2MW per turbine. The hub height is 168 metres.

Q: Who is the turbine supplier?

A: We can't announce the turbine supplier at this stage until the contracts are signed. We will then be able to share this information.

Q. Are the towers made locally?

A. We are still looking into this option. The towers come in eight sections. A local tower manufacturer in Portland is able to make the top section only, however there is currently no capability to manufacture the bottom sections in this country so they will need to be imported.

Q: Will you consider retrofitting the wind farm when it comes to the end of its life?

A: The end-of-life plan after 35 years is to either re-power the turbines by putting a new turbine on the top of the tower and replacing the blades, or they can be decommissioned by dismantling them, cleaning up and then restoring the site.

Q: What are the early works for construction?

A: Early works include timber harvesting to clear the footprint for the towers.

4. Local government and payment in Lieu of rates

Under the Electricity Industry Act 2000 (EI Act) all power generators must abide by a payment in

lieu of rates. As energy generators do not pay rates on the land, a Payment in Lieu of Rates (PiLoR) is to ensure local government receives a rate base from the power generation sector. It relates to a fixed charge and then a quantity that relates to the energy generated. This is measured by the nameplate capacity of the turbines.

The PiLoR methodology sets a payment rate per megawatt hour (MWh) generated by a power station with a nameplate capacity of up to 25 MW, that is indexed to inflation. The turbine nameplate capacity at Delburn Wind Farm will be 6.2MW per turbine.

When the Delburn Wind Farm is constructed, South Gippsland Shire Council will have four turbines, Baw Baw Shire Council will have one turbine and there will be 28 in the Latrobe City Council area. There is a fixed charge rate that is indexed with inflation.

For the 2024/25 financial year, the fixed charge would be \$65,729 and then there's a variable charge for each megawatt produced of \$1480. This is an annual payment to each of the councils per the number of turbines in their council area.

5. Questions asked by CCC members

Q: Does the PiLoR payment replace what Loy Yang and Yallourn pay to the LGA?

A: Yes, but on a smaller level.

Q: What is the number of windfarms operating in Australia? What acceptance/resistance levels are there?

A: To be provided.

Q: Has Delburn sold the power yet?

A: This is part of the final investment stage and happens when the contracts are signed.

Q: VicGrid has now released REZ documents. Is DWF included?

A: Yes, DWF is included.

6. Next steps

Topics of interest CCC members said they would like to know more about:

- Can we revisit the ABC 4 Corners episode from 2024
- Anne to clarify what '43% of renewable generation' from windfarms means

The next proposed meeting date is 23 October 2025 TBC. This would be a hybrid-style meeting.