

Delburn Wind Farm - Community Consultative Committee

Thursday, 12 October 2023

The Grain Store – Mirboo N0rth

Item	Details	Who
1	Procedural Matters: Meeting Open: 6.00 pm Barry Rogers, Chairperson Project Team members: Elizabeth Radcliffe OSMI, Anne Forbes OSMI, Eleanor Barnes Cubico Welcome Apologies	Chair
	Acknowledgment of Traditional Custodians	Chair
	Conflict and Perceived Conflict of Interest	All
2	Welcome from Delburn Wind Farm Team	DWF Project Team
3	About the CCC members - Who are we?	Chair
4	The role of the CCC	Chair Anne
5	About the Delburn Wind Farm - Presentation	Anne & Liz
6	Outline of the proposed meeting processes	Chair
7	Redevelopment of the Terms of Reference (ToR)	Anne, Liz & Chair
8	Meeting Closure: Meeting Close: 7.30pm Next Meeting: 16 November at 6pm – 7.30pm Venue: MCDI Co Space, 96 Ridgway, Mirboo North.	Chair



Delburn Wind Farm Community Consultative Committee Minutes - Meeting #1

Thursday 12 October 2023
6 - 7.30pm
The Grain Store, Mirboo North

Attendees:

- Barry Rogers (Chair)
- Anne Forbes (Secretariat)
- Matt Curtain (Narracan)
- Tony Wolfe (Morwell)
- Trevor Hoare (Boolarra)
- Michelle Slater (Budgerie)
- Lorraine Bull (Morwell)
- Elizabeth Radcliffe (OSMI)
- Eleanor Barnes (Cubico)

Apologies: Kristine Good (Thorpdale), Heather Butler (Mirboo North), Wendy Farmer (Newborough), Ivor Auty (Narracan), Chris Milne (Boolarra/Yinnar), Peter Mooney (Morwell), Sam Maynard (Darlimurla), Lisa Bigham (Traralgon), Marty Sinemma (Narracan),

Invitations to join the new Community Consultative Committee (CCC) were sent out to the community in the form of a media release, e-News update and letters posted directly to residents surrounding the wind farm.

Minutes

1. Procedural Matters

Anne Forbes welcomed all attendees. She explained the former Community and Stakeholder Committee Chair, Anthony Boxshall was unable to continue in the role due to another commitment. Anne welcomed Barry Rogers as the new Chair of the CCC.

The meeting was officially opened by The Chair who acknowledged the traditional owners of the land, the GunaiKurnai people and paid his respects to their elders past and present.

2. Welcome from Delburn Wind Farm Team

Anne Forbes, Elizabeth Radcliffe and Eleanor Barnes provided a welcome from the Delburn Wind Farm team and a brief overview of their roles.

Cubico Sustainable Investments and OSMI Australia are joint development partners on the Delburn Wind Farm. Cubico will purchase 100% of the project prior to the commencement of construction.

OSMI will provide ongoing services including community engagement and development approvals compliance, through the construction period and early operations as they have knowledge of the project and established relationships with key project stakeholders.

3. The CCC – who are we?



The Chair asked members to share where they live and something about themselves: “In one sentence tell us something we would not expect about you.”

The Chair provided an overview of his background and contribution to Gippsland as the Chair of Food and Fibre Gippsland, member of One Gippsland, Fellow at the Gippsland Community Leadership Program, Chair Community Advisory Council West Gippsland Healthcare Group, Board Member Baw Baw Latrobe LLEN, Chair Gippsland Youth Space. Barry is also a Senior Associate and Facilitator with Aurium Consulting and is being paid for his role as Chair of the CCC. The Chair is not a voting member.

4. The role of the CCC

A discussion was held about the first Delburn Wind Farm Community and Stakeholder Consultative Committee (CSCC), formed in March 2021 and concluding in June 2022. Communities surrounding the project, local stakeholders and special interest groups were invited to participate. The objective was to have all views heard, with the aim of generating understanding rather than acceptance of the project.

Members provided feedback on resident concerns, local issues, and preferences on the wind farm design and planning. As a result of the feedback, a range of design parameters were reconsidered and the design amended accordingly. Specific feedback from the CSCC helped improve the design of the website to make it more accessible, and highlighted where more work was required to assist the community in understanding technical information. Members were asked to commit to adhering to the Code of Conduct and Conflict of Interest Procedures.

Anne Forbes talked about the role of the new Community Consultative Committee (CCC) and the importance of two-way communications. Meetings will be held monthly, with an option to go bi-monthly in the middle of next year, based on member feedback. A site visit will also be offered to members when construction is underway. Members were advised their names would be published externally to inform community members who the CCC members are. If any member had a concern about this, they were requested to contact Anne Forbes asap.

CCC participants will be the first to hear of construction plans, with work due to commence in 2024. Each meeting will provide a platform for open discussion and valuable community input, helping to drive community updates and information sharing. This is an opportunity to find out what’s involved with the delivery of the wind farm, ask questions, share a local perspective and provide feedback. It was noted members are not expected to spend hours at a time going door to door and discussing the wind farm with their neighbours. The CCC is just one mechanism in addition to the many other engagement channels available as part of the Delburn Wind Farm community engagement commitment. Members may wish to provide feedback if they are out and about chatting with neighbours or friends. It is not a requirement for committee members to advocate for the wind farm. All information discussed during the CCC can be shared externally.

A member of the committee requested having the option to be able to join the meetings online if they were unable to attend in person. Anne said she would ensure this is established



for the next meeting, however the preference is for people to attend in person as much as possible for conversations to flow.

Meeting records will be produced by Anne Forbes as the Secretariat. Minutes will be circulated to committee members after each meeting and posted on the Delburn Wind Farm website.

The Chair outlined his expectations in relation to meeting norms and requested:

- All opinions to be treated with respect
- Agreed actions to be carried out in a timely manner
- Agenda items estimated times adhered to
- All members take turns speaking and actively listen and contribute to discussions.

5. Delburn Wind Farm - Project Update

OSMI provided an update on the status of the project – refer to the PowerPoint presentation attached.

Following the presentation, several questions were asked by CCC members:

Q: How tall will the turbines be?

A: The turbines will be 248 metres tall at the tip of the blade and the hubs will be around 166 metres above ground level.

Q: Do you need to wait for commissioning of the wind turbines before they can start to create energy?

A: Not all turbines need to be commissioned before they can start to produce energy.

Q: Who will own the terminal station?

A: The terminal station will be an AusNet facility. All transmission lines within the wind farm will be placed underground.

Q: How many tracks will there be?

A: There will be a total of 33kms of tracks, some will be new or upgraded. These will remain unsealed but will be widened to facilitate the delivery of the towers and turbines.

Q: Will bike riders and people on horses still be able to access the plantation once the wind farm is built?

A: HVP has rules in place about accessing the plantation. HVPs current access arrangements to the plantation will remain unchanged but there will be fencing placed around the base of each turbine.

Q: Did OSMI purchase the land in the plantation?

A: The land is freehold, and the Delburn Wind Farm will lease it from HVP. There will be a total of 150 hectares of land leased in total.

Q: Will road upgrades be required for the delivery of the turbines and towers?

A: The delivery route for the turbine components and towers is currently being finalised. The majority of the components will likely be delivered via the Over Dimensional route from the



Port of Hastings via the M1 into Marrotts Rd, then along the Strzelecki Highway. Road upgrades are required along Deans Rd, Varys Track, Golden Gully Rd, Smiths Rd and Creamery Rd to ensure the roads are of adequate width, bearing capacity and slope for large component delivery. Upgrades will be required at some intersections with the Strzelecki Highway (at Deans Road, Golden Gully, Rd, Smiths Rd and Creamery Rd) to allow safe turning movements of construction traffic and to allow the movement of over-dimensional loads particularly the wind turbine blades. Some of the lower tower sections are expected to need to be delivered via the South Gippsland Highway due to height limitations on the M1.

Q: What is the procurement process?

A: There is currently a tender process underway with two turbine manufacturers Vestas and Siemens Gamesa. No contract has been awarded yet but it is likely to be Vestas. The wind turbine and towers are manufactured overseas. There are no turbine production facilities in Australia. The tower sections can be made in a number of different countries including some local manufacturing capacity in Australia.

The Port of Hastings was recently declared by the Victorian Government as the official offshore wind port for Victoria. The Delburn Wind Farm project team has been liaising with Hastings well before this announcement regarding delivery options for turbines.

The project team are working with the Latrobe Valley Authority to capture the local skills base, employees and suppliers that will be required to work on and deliver this project. We have been developing a large database of skilled workers across Gippsland for procurement. There is a lot of industry in the area that are being identified as having transferable skills to work in renewables.

Vestas have advised that on a recent wind farm project they delivered in a predominantly agricultural area of Victoria over 50% of the workforce came from within 60km of the site. Given the DWF will be delivered in an area that has a large workforce already working in the energy sector, we anticipate that a higher proportion of local labour should be able to be engaged during construction.

6. Proposed meeting process

The Chair requested members email Anne Forbes prior to the meeting and ask for any agenda items they would like to be included.

The minutes of each meeting will be circulated to members and published on the delburnwindfarm.au website. There will be an opportunity at the start of every meeting for members to provide an update with feedback. There will also be time for questions and answers in each meeting.

The Chair discussed what a Conflict of Interest and perceived conflict of interest may be and how this can be reported at each meeting.

7. Redevelopment of Terms of Reference (ToR)



Barry and Anne talked about the former CSCC Membership Commitment document, the Terms of Reference (ToR) and the Code of Conduct. They need to be updated in agreement with the new committee.

A copy was provided to all present committee members who were asked to consider it between now and the next meeting and offer any amendments for consideration at the next meeting. A copy will be emailed to all CCC members who were unable to attend.

8. Meeting Close

Next meeting

Note the next meeting will be held on 16 November from 6-7.30pm at MCDI Co Space, 96 Ridgway, Mirboo North.

Please inform Anne Forbes ASAP if you have any dietary requirements.

Actions arising:

1. Committee members to send ideas about topics they would like covered at future Committee meetings to csc@delburnwindfarm.com.au
2. Committee members to review the Terms of Reference and the Code of Conduct and forward any suggested amendments to the chair via csc@delburnwindfarm.com.au
3. All committee members must advise Anne Forbes asap if they are not comfortable with their name being shared with the community as part of their role in the CCC.



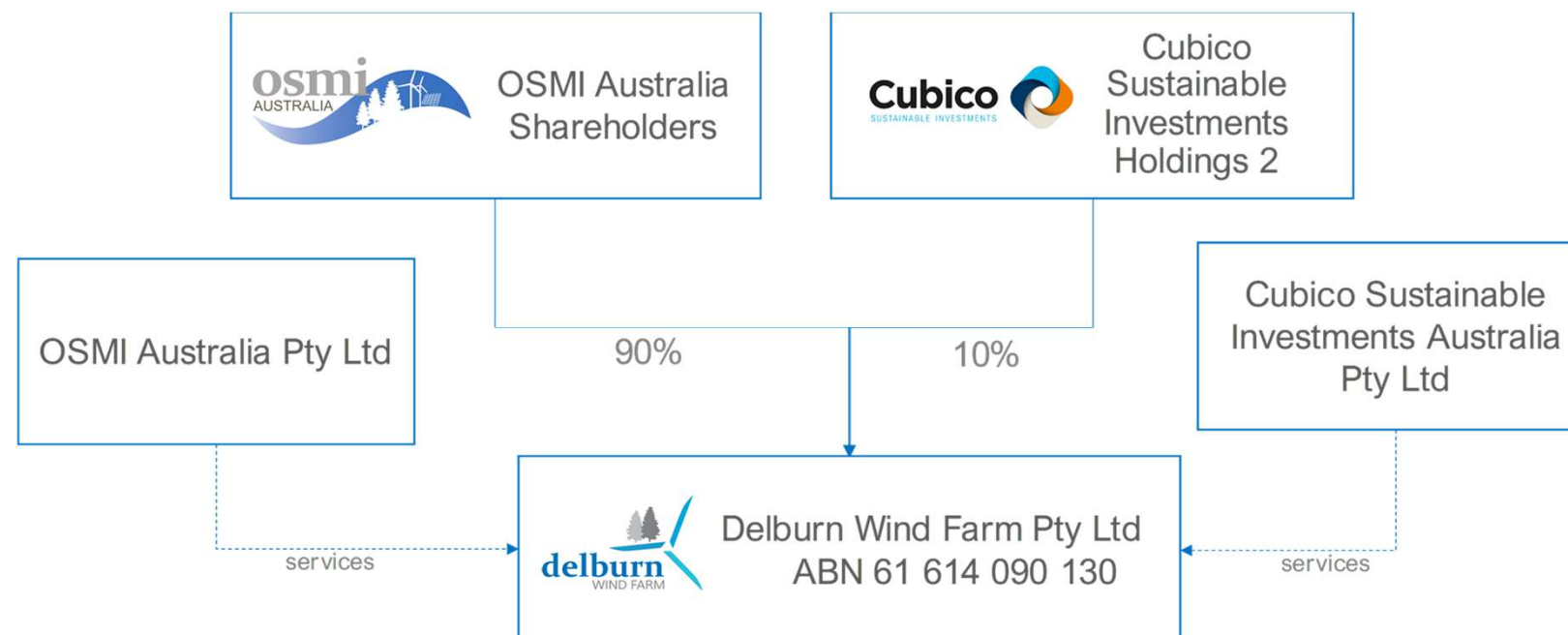
Delburn Wind Farm – CCC Meeting #1

12 October 2023

Development and Ownership Model



- The Delburn Wind Farm is a joint development between OSMI Australia and Cubico Sustainable Investments
- Cubico hold exclusive rights to acquire the remaining shares at Financial Close and will act as the long-term asset holder and operator

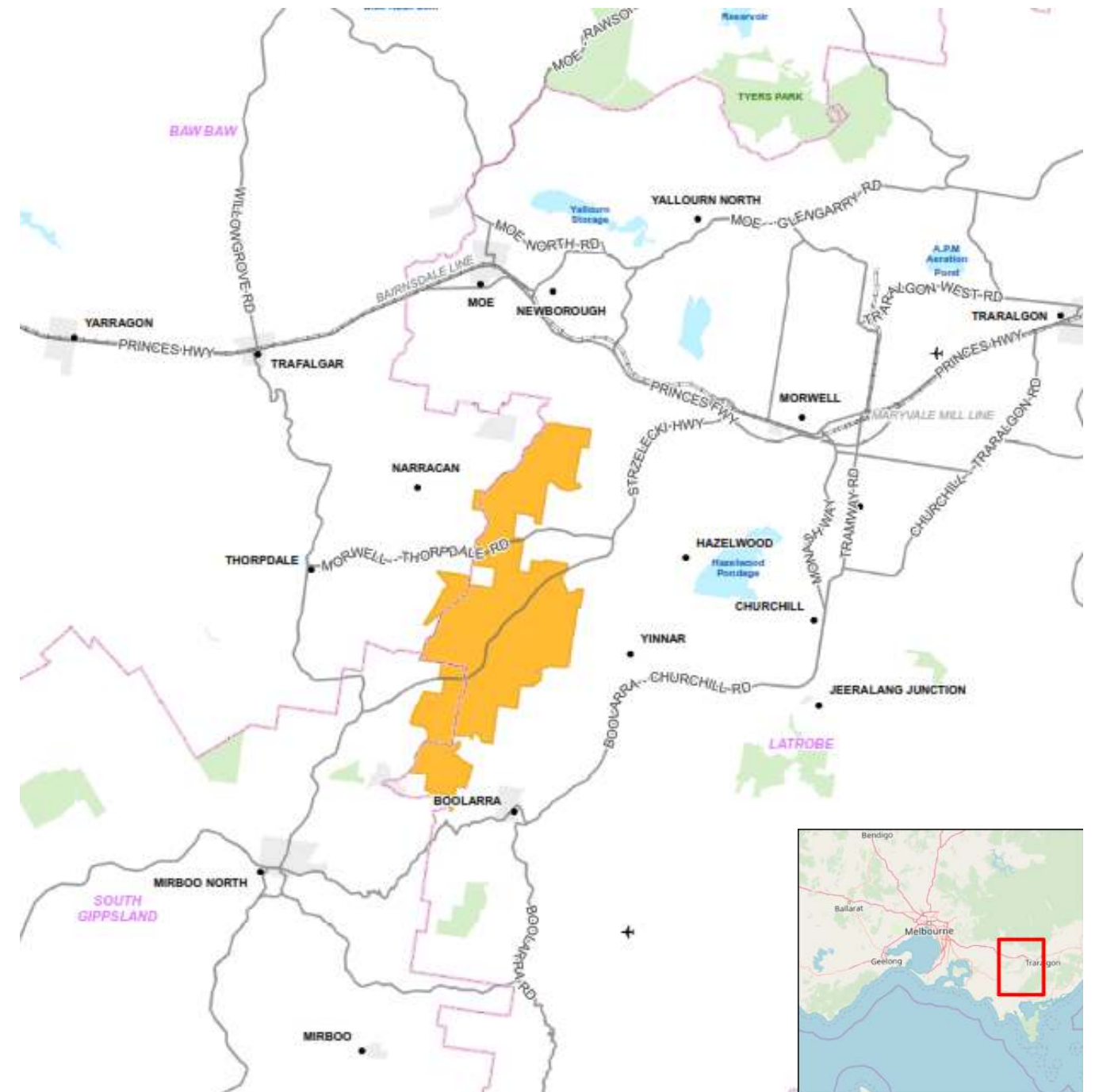


Development phase ownership structure

Project Location



- The wind farm site is located within pine plantations owned by HVP
- South and west of Yallourn and Hazelwood open cut mines and in close proximity to extensive transmission networks
- The site covers three local municipalities: Latrobe City, South Gippsland and Baw Baw Shire



About the Delburn Wind Farm



The most advanced plantation-based wind farm project in Australia



33
WTGs



205-218 ^{MW}
6.2 - 6.6 MW



250 ^m
tip height



\$450 -500 ^M
CAPTEX



640,000
tonnes CO₂ p.a



135,000
VIC homes powered



2023-24
construction



30-35
years ops

Local Economic Benefits



- Creation of up to 200 new full-time equivalent jobs during construction
- Up to 24 ongoing jobs over the 35 year life of the wind farm
- Helping build local skills for the renewable energy transformation in Gippsland
- \$106 million increased Gross Regional Product across three Local Government Areas, during construction and 35 years of operation
- Flow on benefits to local suppliers, contractors, businesses, accommodation and shops



Community Engagement Activities

- Early community engagement with open days, face to face meetings, online surveys, website and regular e-news updates
- Regular updates via local media, social media and e-Newsletters
- Bus tours of Bald Hills Wind Farm
- Letters sent to near neighbours and residents within 6kms
- Community Development grants available to local groups
- Community & Stakeholder Consultative Committee established for shared information and advice
- Near neighbour on site visual assessments and discussions on screening options
- Attendance at career and job expos
- New Delburn Wind Farm website launched



Community open day at Thorpdale



Office at 66 Ridgway Mirboo North

Planning Approval Granted



- The Minister for Planning issued 4 planning permits for the development of the wind farm and terminal station in March 2022 (but not the battery).
- A Supreme Court challenge was made by the SCA against the Victorian Planning Minister's decision to grant planning permits for the Delburn Wind Farm. The Judge ruled the planning permits remain valid
- We applied for a Planning Permit Amendment at the end of August regarding the wording of several of the conditions to improve understanding and interpretation, as well as ensuring the enforceability of the permit requirements. This is currently with the Department for consideration
- We will commence construction in Q1 2024, continue to engage with the community and develop the community benefits scheme



Previous CSCC



- First CSCC formed in March 2021. We invited communities surrounding the project, as well local stakeholders and special interest groups to join
- Our aim was to include all views and focus on generating understanding, rather than acceptance of the project
- Meetings covered topics of planning, development and construction of the wind farm
- Members provided two-way communications between the community, stakeholder groups and the project team
- Feedback was provided on resident concerns, local issues, and preferences on the project design and planning
- All members were asked to commit to adhering to the Code of Conduct and Conflict of Interest Procedures

Design Amendments & feedback



- As a result of the community feedback, the design was amended from 53 turbines to 33 turbines.
- This was to increase setbacks to homes to reduce noise and visual impacts, decrease vegetation impacts and reduce potential impacts on communications pathways.
- Specific feedback from the CSCC helped improve the design of the website to make it more accessible
- The feedback informed us to understand where more work was required to assist the community in understanding technical information

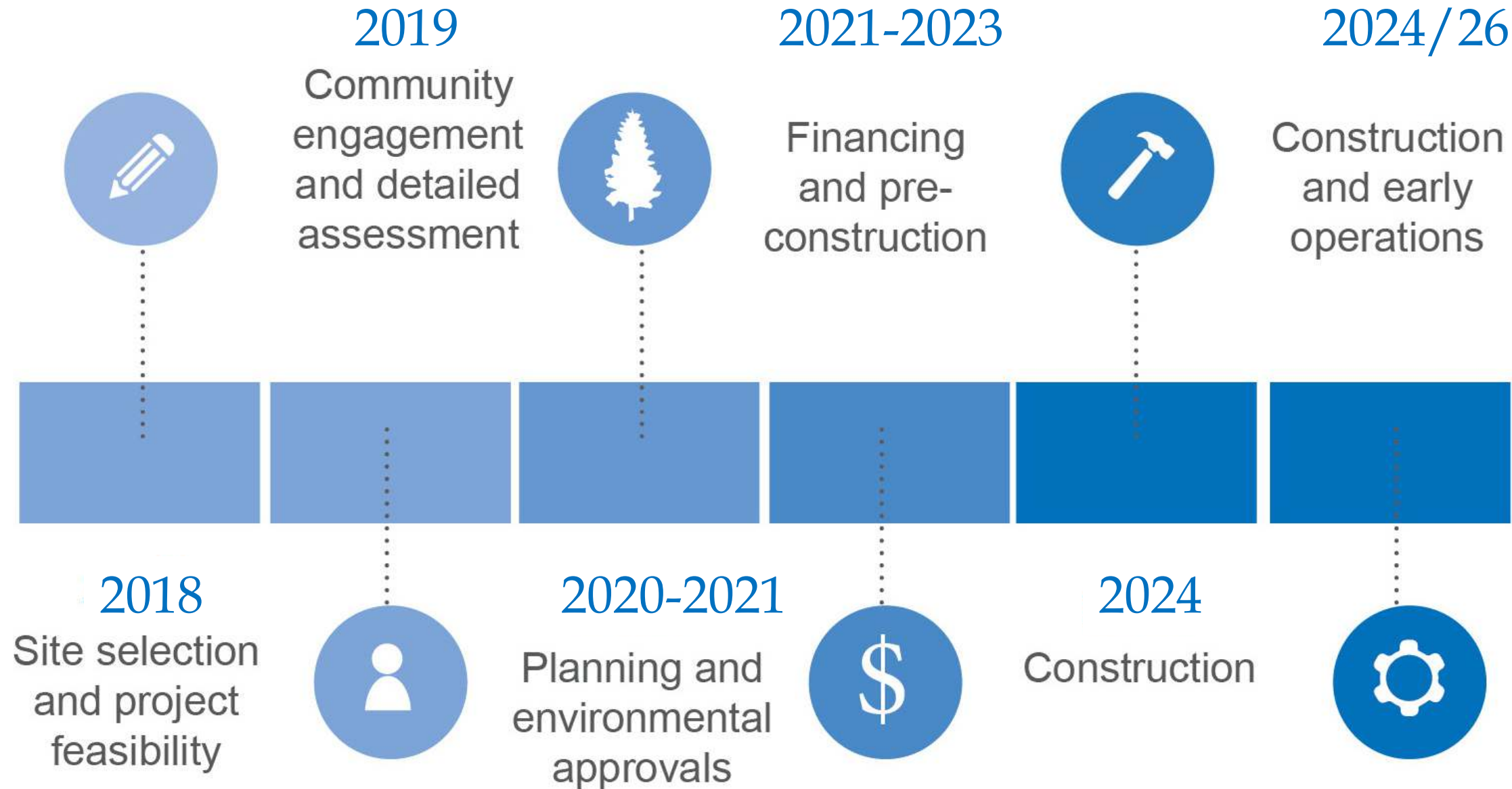


Planning Permit Conditions



- Before construction, a number of Planning Permit conditions must be met in addition to detailed design, logistical works and contractual arrangements. Conditions include:
- Emergency Management Plans, fire detection & suppression requirements, bushfire risk and mitigation, fire water resources
- A Traffic Management Plan, Traffic Upgrade Work Plan and a pre-construction public survey
- Environmental Management Plans, Bat & Avifauna Management Plan and a Flora & Fauna Management Plan
- Native Vegetation Management Plan and offsets
- An Offsite Landscaping Plan
- A Complaints Management Plan
- A Decommissioning Plan

Project Timeline



Questions



Anne Forbes

Manager Communications and Engagement

anneforbes@osmi.com.au

1800 676 428



Delburnwindfarm.au

contactus@delburnwindfarm.com.au

1800 676 428