



Minutes – Delburn Wind Farm Community and Stakeholder Consultative Committee Meeting 8

22/11/2021

Field Trip

3:00-7:30pm

Attendees:

- Anthony Boxshall (Chair)
- Graeme Wilson (Delburn)
- Trevor Hoare (SSF)
- Lorraine Bull (GCCN)
- Cathryn Thompson (SSF)
- Peter Mooney (GTLC)
- Simon Heislars (HVP)
- Elizabeth Radcliffe (OSMI)
- Ruth Harper (OSMI)
- Stacey Clark (Observer, EPA)
- Tony Wolfe (Coal Industry Worker)
- Matt Ryan (Observer)
- Heather Butler (Mirboo North)
- Kelsey Tong (WGCMA)
- Ash Hall (LVA)
- Chris Milne (Boolarra) for BBQ and informal discussion only

Apologies: Ian Hill (Landcare Network) Wendy Farmer (Voices of the Valley), Charlie Solomon (GLaWAC),

Minutes

Agenda Item 1: Welcomes, aims for tonight

The Chair opened the meeting by acknowledging the traditional owners of the lands that we were meeting on, being Gunaikurnai, and paid his respects to their elders past, present and emerging.

The Chair revisited his expectations in relation to interactions within the committee. The Chair reviewed the purpose of the meeting – to provide the committee with an understanding of the flora and fauna assessments completed and the design iterations completed to reduce impacts on flora and fauna.

Agenda item 2: Introduction, Observers and Conflicts of Interest

The Chair welcomed all participants and introduced Ash Hall from the Latrobe Valley Authority.

No Conflicts of Interest were declared.

Agenda item 3: Review of Actions arising from last meeting

OSMI confirmed that details in relation to how the community could observe panel hearing had been circulated via the subscriber e-news. Media release and posted on the projects Facebook page.

Agenda item 4: Safety Briefing

Simon Heislars of HVP provided a safety induction as required to ensure everyone understood the risks associated with travelling into an operational plantation.



COVID safe measures were discussed for the site tour.

Agenda item 5: Planning update

Liz Radcliffe (OSMI) provided an update on the status of the planning process. The planning panel hearing has concluded, and the panel are due to conduct an accompanied site tour with OSMI and representatives of DELWP, CFA, local councils and SCA. The Panel indicated they would take approximately 8 weeks to complete their report and submit it to the Minister for consideration – which is likely to be in mid-January.

Agenda item 6 Presentation on flora and fauna impacts from OSMI

Ruth Harper (OSMI) provided an outline of the proposed site tour covering key points of interest:

- Creamery Road Junction with Strzelecki Highway – native vegetation clearance for intersection upgrade – did not stop at this site
- Smiths Road Intersection with Strzelecki Highway – stop under the 'Koala Tree'
- Clarks Road Biodiversity assessment – Strzelecki gum and Growling Grass Frog habitat avoidance – stopped and walked around the site
- Nursery Track - Sliver Creek Crossing – stopped and walked around the site
- Luxford Pond – Habitat restoration opportunities - stopped and walked around the site.

The committee travelled in convoy to each of the locations. At each location Ruth provided an overview of the significant biodiversity features and design refinements made to avoid, reduce or mitigate the impacts of the project. Each committee member was provided with a site plan and print out of the presentation which is attached.

Agenda item 7 – BBQ

A BBQ dinner was cooked and served at Baromi Park over informal discussion.

Next meeting

It was agreed that the next meeting would not be scheduled until the outcome of the planning process is known. A 'check in' will be scheduled in mid Feb if no outcome is received prior to this date.

The committee formally farewelled Ruth Harper who has resigned from OSMI to take up a position as Environment Coordinator at Latrobe City Council.

Rolling Actions

- All committee members to communicate widely about the CSCC seeking further members particularly from communities local to the planned wind farm, highlighting the desire for a diversity of opinions.
- Committee members to send ideas about topics you would like covered at future Committee meetings to csc@delburnwindfarm.com.au. There is no limit on the number of items a committee member can nominate.



- All committee members to review the Managing Conflict of Interest information online site <https://osmi.com.au/consultative-committee> and advise the Chair of any potential, perceived or actual conflicts of interest that before the next meeting.



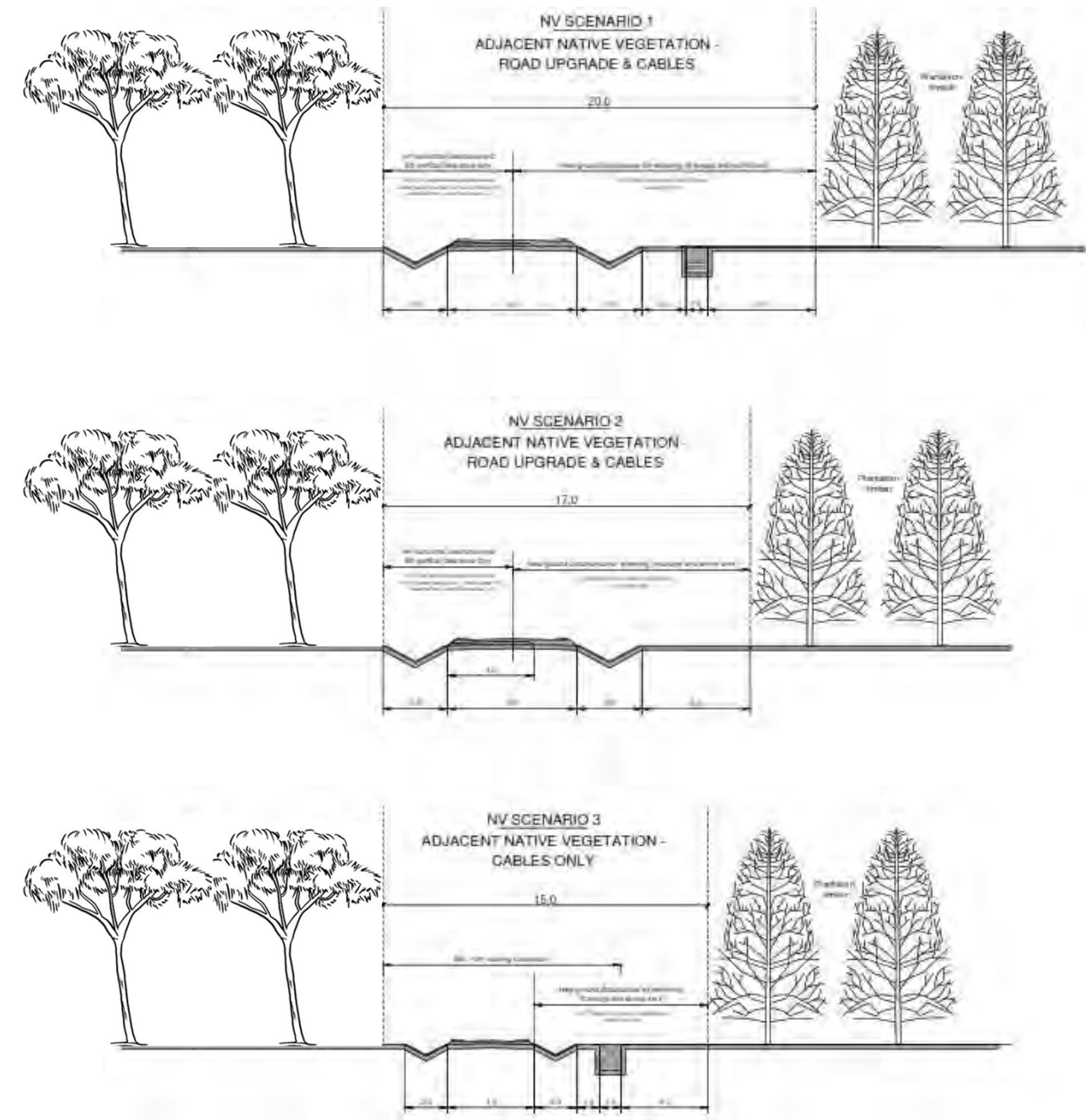
Delburn Wind Farm Flora and Fauna

CSCC - November 2021 - 3pm Baromi Park

Native Vegetation Removal



- All native vegetation impacts all relate to access tracks and cable routes, no WTGs or hardstands impact NV
- Design refinements and constraints applied for areas of native vegetation adjacent to existing forestry tracks
- Native vegetation impacts have decreased from approximately 42 ha (inc. 154 large trees) to 14 ha (inc. 53 large trees) due to a range of design modifications
 - It is anticipated that over half of these trees will be able to be retained despite needing to be offset



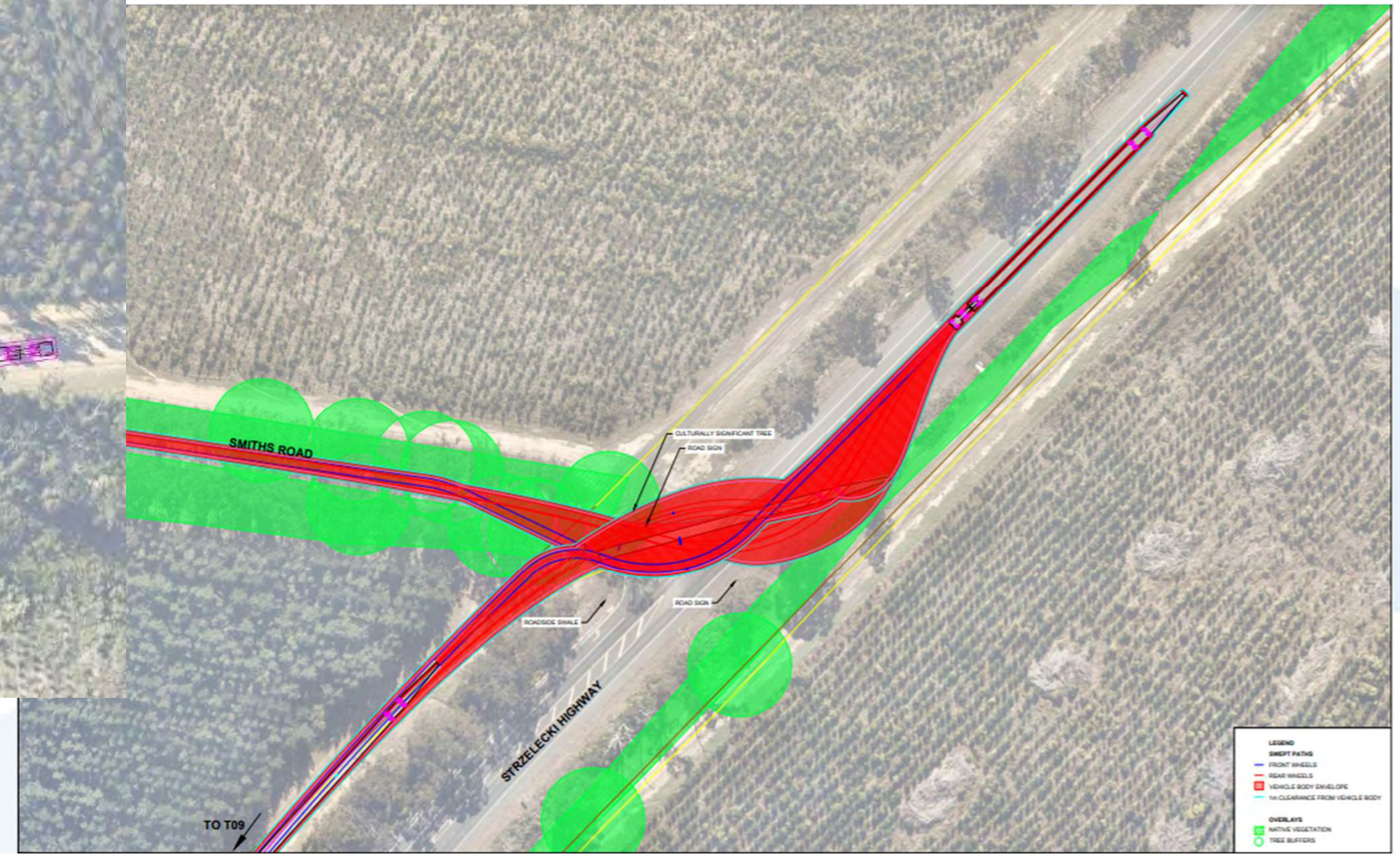
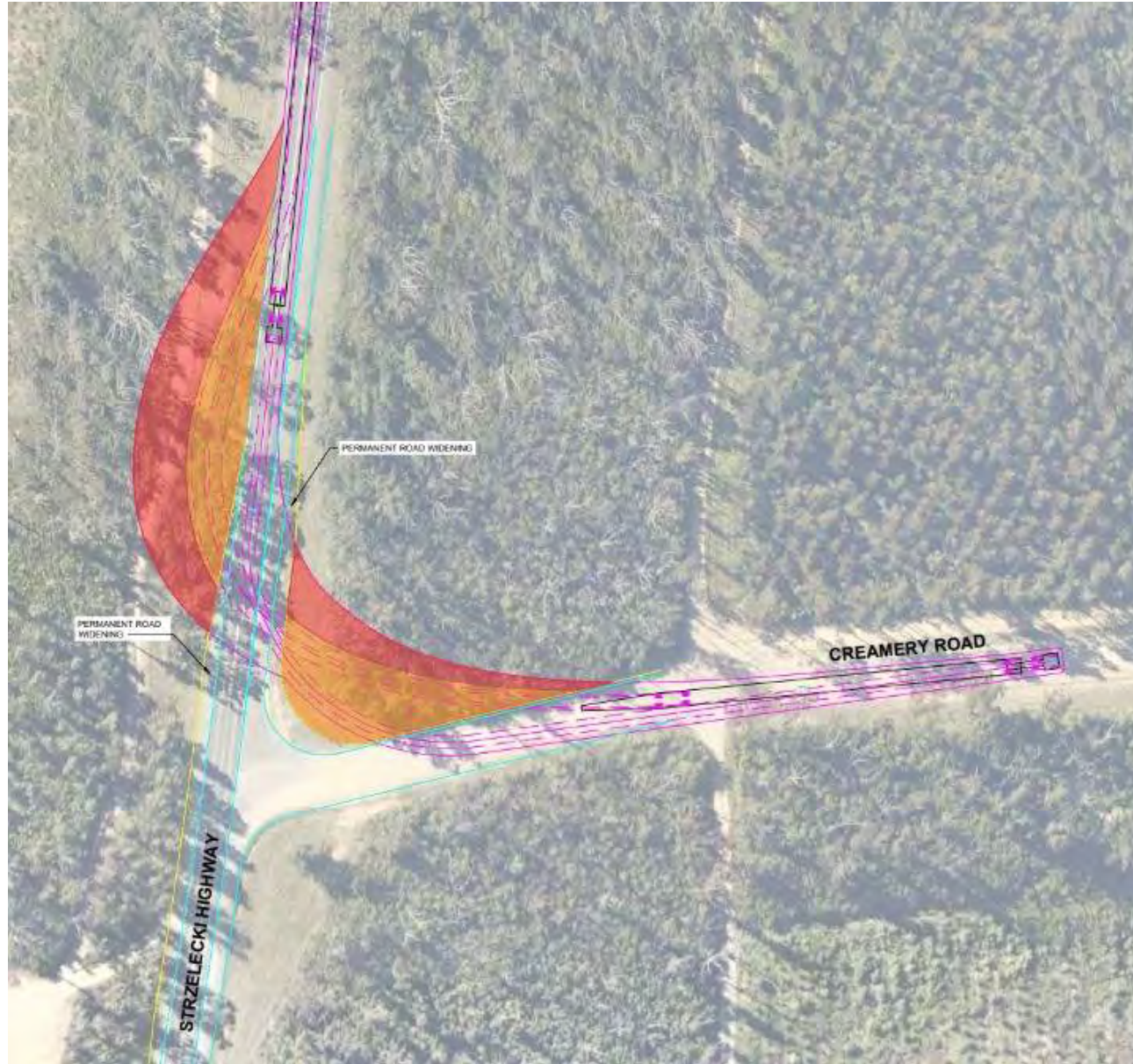
Native Vegetation Avoidance



- Wherever possible, large trees have been avoided by changes to the initial design.
- Around half of the impacted native vegetation is expected to remain in situ and survive
- All 14 Ha will be offset, even if only half is directly impacted
- The 'koala tree' at the corner of Smiths Rd and Strzelecki Hwy will not be removed.
- All Strzelecki Gums have been avoided



Native Vegetation Impacts



Growling Grass Frog



- Growling Grass Frog breeding habitat has been identified in Silver Creek
- The creek crossing site was moved to from Clarks Road to Nursery Track avoid this growling grass frog breeding habitat.
- DELWP have specific design requirements Growling Grass Frog crossings (for 2 and 4 lane roads) the principals of which have been incorporated in the crossing design at Nursery Track.



Growling Grass frog crossing design

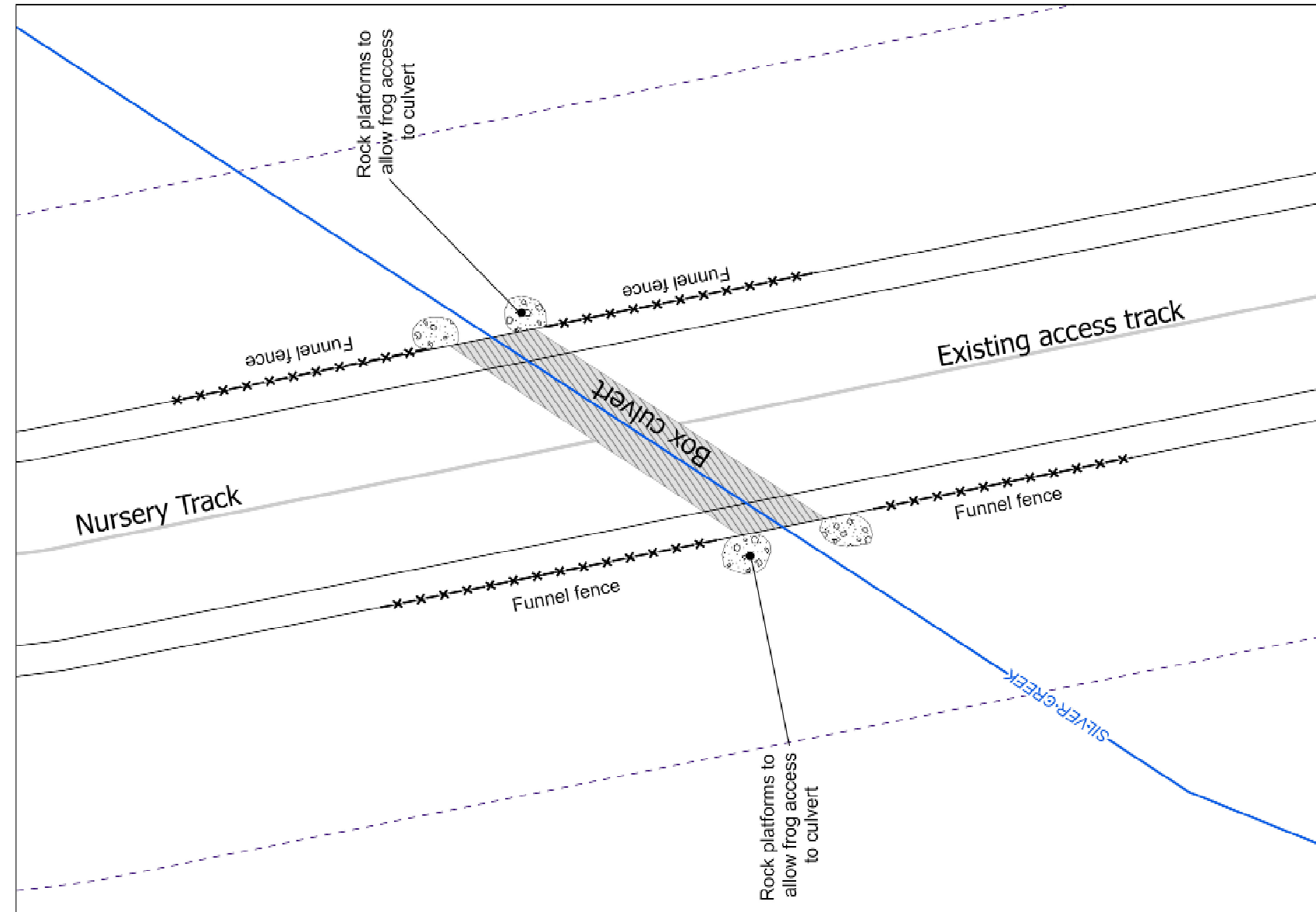


Growling Grass Frog Crossing Design Standards

Melbourne Strategic Assessment



DELWP have specific design requirements Growling Grass Frog crossings (for 2 and 4 lane roads) which have been incorporated in the crossing design at Nursery Track.



Habitat Restoration



- OSMI have the support of HVP, Greening Australia and the Biolink Working Group to conduct rehabilitation and restoration activities around Luxford Pond and Silver Creek.
- The existing creek adjacent to the creek crossing is highly degraded and weedy.
- There is huge potential to improve the habitat for Growling Grass Frog and Strzelecki Gum in the area, as well to create new habitat links and corridors to support the Biolink aims.

