



## Minutes – Delburn Wind Farm Community and Stakeholder Consultative Committee Meeting 3

5-7pm, 31/05/2021, Online (Zoom)

Attendees:

- Anthony Boxshall (Chair)
- Ruth Harper (Secretariat)
- Graeme Wilson (Delburn)
- Tony Wolfe (Morwell)
- Catheryn Thompson (SSF)
- Ivor Auty (Narracan)
- Wendy Farmer (Voices of the Valley)
- Lorraine Bull (GCCN)
- Peter Mooney (GTLC)
- Andy Newell (HVP)
- Hugh Thompson (HVP)
- Matt Ryan (Observer)
- Stacey Clark (EPA, Observer)
- Chris Milne (Boolarra)
- Elizabeth Radcliffe (OSMI)

Apologies: Charlie Solomon (GLaWAC), Rhain Bateman (WGCMA), Mike Timpano (LVA), Tomas Mabin (Driffield), Christine Legg (South Gippsland Shire Council), Heather Butler (Mirboo North).

The following organisations have been invited to sit on the committee and are still considering their participation: Latrobe City Council, Boolarra Community Development Group, Yinnar and District Community Group, Mirboo Country Development Inc, Landcare

### Minutes

#### Agenda Item 1: Welcomes, aims for tonight

The Chair opened the meeting by acknowledging the traditional owners of the lands that each of us were on (being various) and paid his respects to their elders past, present and emerging.

The Chair welcomed all participants and did a brief run through of Zoom technology and etiquette for those not familiar with it.

The Chair revisited his expectations in relation to interactions within the committee requesting:

- Constructive frankness,
- Respect,
- Confidence and humility, and
- Representative perspective

The Chair reviewed the purpose of the meeting – to note the final ToR, to discuss the current communication tools and building trust with the community (priority topic), and to discuss the proposed community benefits.



## **Agenda item 2: Introduction, Observers and Conflicts of Interest**

The Chair welcomed new attendees Hugh Thompson, Land Resources Manager for HVP, and observer Stacey Clarke from EPA and invited everyone to introduce themselves and their affiliation again briefly for their benefit. Matt Ryan, Boolarra police officer and local Boolarra resident, also joined the meeting a little after the introductions were complete.

No conflicts of interest were declared. The Conflicts of Interest register on the OSMI website will be updated to reflect that no conflicts have been declared to date. This will be revisited at each meeting.

The Chair asked if everyone who is representing a locality was clear that they had self-nominated and were not elected representatives. All agreed and it was noted that a line would be added to the website to clarify the point.

## **Agenda item 3: Review of Actions arising from last meeting**

It was noted that the OSMI brochure has been updated with information about the ownership of the project and the relationship between OSMI and Cubico as requested.

OSMI has considered advertising for members to reach further into the community but has been waiting further information from DELWP regarding the approvals timing.

There was a discussion on the definition of plantation vs forest, and which is the most appropriate for the project. It was noted that the distinction needs to be made between plantation and remnant native vegetation when referring to the project.

## **Agenda item 4: Terms of Reference - Finalised**

It was noted that no further feedback was provided on the TOR, and it is now considered finalised.

## **Agenda item 5: Communication to build trust**

Liz from OSMI provided a quick update on the anticipated timeline of the approvals process, noting that this is still subject to change. The update from DELWP is that the application is expected to be sent to referral agents within a week or so, meaning the public exhibition period will likely begin late June/early July. This would put the panel hearing in late August/early September.

In the last meeting, the website was flagged as one of the most important interfaces between OSMI and the broader public, therefore accessible, transparent and relevant information on the website is critical.

In order to get a first hand experience of the accessibility of information on the website, the Chair explored the website live in the meeting using prompts from committee members. A number of areas were investigated, included general topics such as fire and noise, and more specific questions such as capacity factor.

The following is a summary of the feedback from the session:

- The headings and sub-headings on the website do not make it immediately obvious to a first-time user where to find the information they are looking for



- The information contained on each subject page (under technical assessments) is often too detailed, general and doesn't do much to address the specific concerns that many people have (not true of all topics – visual was considered to be pretty good, complaints process was fine)
- The FAQs need to be updated to cover the more recent concerns and topics, e.g., how is fire in a wind turbine suppressed?; what is the audible noise?
- The website needs a search function to enable users to find the information that seek without moving in and out of the sub-pages.
- There are too many FAQs now to not have them organised in some way. One suggestion was to add a button bar at the top of the page to skip directly to different topic areas, and to allow you to see what broad topics are covered.
- OSMI to consider doing more regular media releases covering not just updates, but technical aspects of the project, such as fire, noise, biodiversity, in simple easy to access language.

#### **Agenda item 6 Community Benefits presentation**

The Chair conducted a Menti poll to get a baseline idea of how much is known/understood about the Community Benefits Program (Attachment A).

Liz Radcliffe (OSMI) provided a presentation on the community benefits program. The presentation (Attachment B) covered details of the Delburn Wind Farm benefits package, including the neighbourhood profit sharing agreements, the community development fund and the community co-investment opportunity.

There was a discussion on the operational protocols for extreme fire days, which will be discussed in more detail in the fire session. There was also a discussion around the manufacture of wind turbines in Australia and the recycling of blades.

Committee members were asked for ideas for the community benefits scheme. Suggestions included were bike tracks in the plantation, free electricity for neighbours, education programs and community grants. (See Attachment A for more ideas from members).

#### **Wrap Up**

The next meeting is scheduled to discuss issues around fire, as this has been raised quite a few times during general conversation.

#### **Next meeting**

Next meeting to be held on Monday 28 June 5 – 7pm, Darlimurla or online.

#### **Actions arising:**

- OSMI to update conflict of interest register on website
- OSMI to note on website that locality representatives are self-nominated



- OSMI to review FAQs to ensure that all topics are relevant to this stage of the project and community concerns
- Committee members to think of ways to frame the questions in the FAQs to make them more applicable to the questions and community concerns
- OSMI to consider more media releases to support the website
- Committee members asked to bring ideas for potential benefits to the next meeting
- OSMI to consider timing for the next community grants program, given the likely timeframe for the approvals process

### **Rolling Actions**

- All committee members to communicate widely about the CSCC seeking further members particularly from communities local to the planned wind farm, highlighting the desire for a diversity of opinions.
- Committee members to send ideas about topics you would like covered at future Committee meetings to [csc@delburnwindfarm.com.au](mailto:csc@delburnwindfarm.com.au). There is no limit on the number of items a committee member can nominate.
- All committee members to review the Managing Conflict of Interest information online site <https://osmi.com.au/consultative-committee> and advise the Chair of any potential, perceived or actual conflicts of interest that before the next meeting.

# Current benefits that I have heard about...

Approx \$2000 for people within 1.5km of a turbine, \$1000 for those within 2km

not a lot

increased renewable energy, new jobs, visible transition, investment opportunity

Other benefits as per the web site

It is unclear at this stage how the proposed community fund will benefit people directly impacted by the windfarm

Part of the transition

Direct payments to immediate neighbours (distance not completely firm) - and much less than payments at farms in the east. Community fund to be used as community fund group determines

Keeping Latrobe Valley as a energy production region

Renewable energy companies let the community engage with them, coal industry never did that they did to community.

# Current benefits that I have heard about...

Opportunities for new jobs for people to transition too.

Denmark have neighbours owning some of the turbines

Hepburn Wind Farm has put a lot into the local community. AGL/EA/Alinta/Opal paper/Bank Australia etc all have community funds

# Other types of benefits I know from elsewhere to consider...

Free electricity for neighbours?

Grants programs each year for any community group and sporting clubs

I've seen wind farms double as great environment parks and walking/biking tracks

Education programs

Denmark have residents owning % of turbines

Neighbourhood electricity grid sharing power with local industries

Check out Hepburn Wind Farm benefits to local area. Need to consider a wide range of community interests and sections which need support ie not just sports clubs

# Thinking about today's CSCC meeting...





# To improve our meetings when they are online, we should...

Headsets greatly help

be happy that we have this  
technology - I find it works very well.



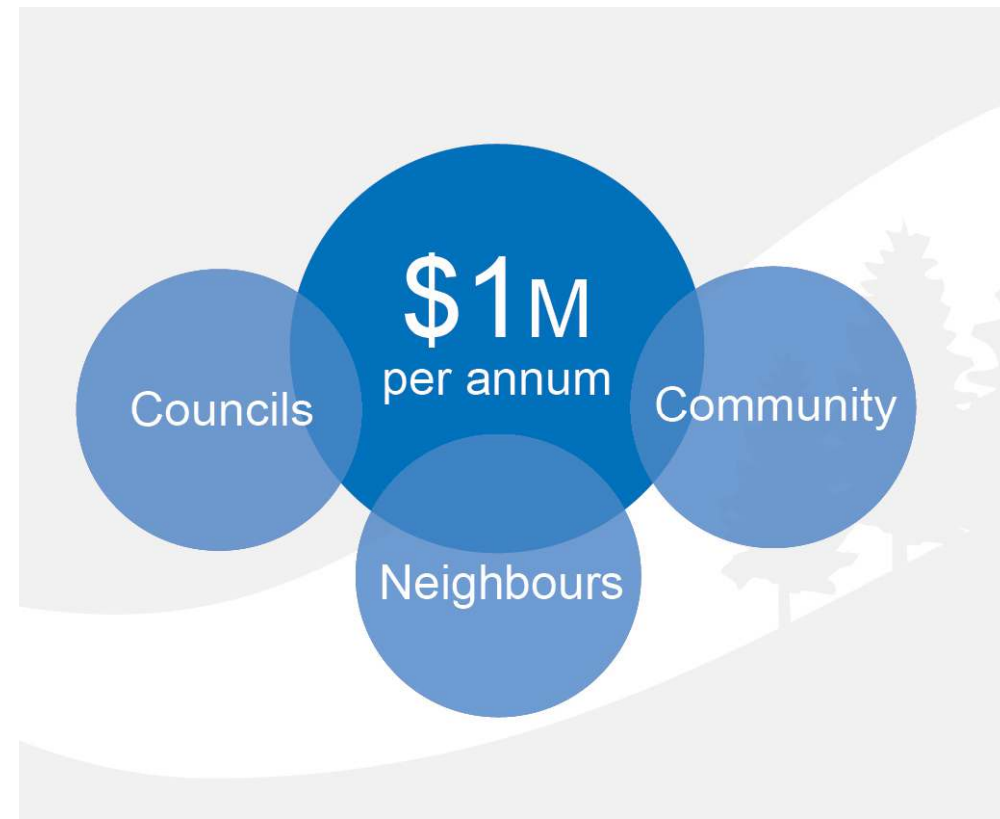
# Delburn Wind Farm Project

Community and Stakeholder Consultative Committee Meeting - May 2021

## Community Benefits

---

- Increased Regional Economic Activity
- Job Creation
- Road upgrades
- Improved fire response capability
- Community benefits fund
- Neighbour profit share
- Community co-investment opportunities
- Council 'rates in lieu'



## Direct Economic activity

---



### Construction costs

- \$358 million
  - Development \$10 mil
  - Manufacturing \$210.3 mil
  - Construction \$139.1 mil
- Location of expenditure \*
  - Overseas 38%
  - National 20%
  - State 27%
  - Regional 15%

### Operational costs

- \$7.4 million per annum for 30 years
- Location of expenditure \*
  - Overseas 0%
  - National 58%
  - State 14%
  - Regional 28%

\* Derived using 2012 Clean Energy Council modelling. Given capability in the Latrobe Valley region it is anticipated that regional expenditure will make up a greater proportion of the total expenditure

## Job Creation

---



Economic modelling indicates that approximately 186 jobs will be created during the construction phase and 25 during the operational phase.

The direct construction jobs will be for a period of about 2 years and should earn above average wages.

Types of roles required during construction include:

- Cable Joiners
- Civil Engineers
- Construction supervision
- Concreters
- Dump truck drivers
- Ecologists and Arborists
- Electricians
- Electrical installation
- Electrical Trade Assistants
- Excavator operators
- Forklift operators
- General labour
- Grader and dozer operators
- Landscapers
- Loader operators
- Piling Technicians
- Pipelayers
- Project Management
- Roller operators
- Security
- Steel fixers
- Telehandler operators
- Truck drivers
- Watercart drivers

# Job Creation

---



Suppliers of the following goods and services are likely to be required during construction.

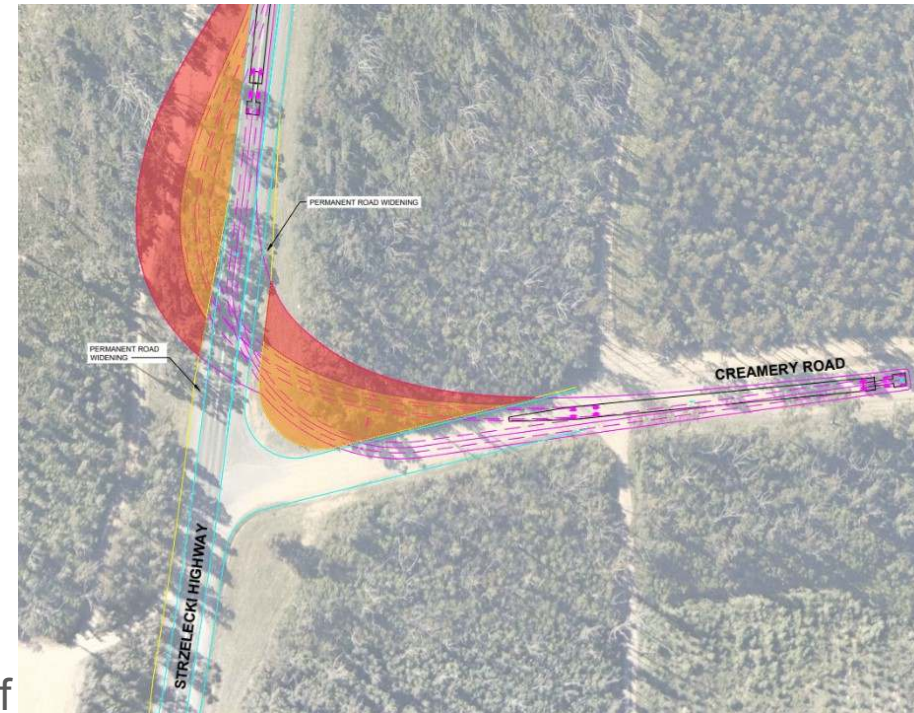
- Accommodation
- Cable Trenching and Directional Drilling
- Cleaners
- Computer network support
- Concrete batching plant supply and operations
- Concrete pumps
- Cranage (Major and minor lifts)
- Earthworks
- Fencing
- Food and catering service
- Formwork
- Freight
- Fuel
- Material Testing
- Mechanical Fitter/Maintenance
- Quarry Products
- Safety Products
- Security Systems
- Septic Pump Out Services
- Small Equipment Hire
- Telecommunications
- Temporary Fencing
- Transport (minor)
- Transport (over dimensional)
- Waste Management (liquid and solid)
- Water (construction and potable)
- Welding & engineering fabrication

# Road upgrades

---



- Road upgrades to:
  - Creamery Road intersection on Strzelecki Highway will improve safety and brings forward works that would otherwise need to be funded by the state
  - 4.5 kilometers of public local roads to be resurfaced
    - Golden Gully Road
    - Deans Road
    - Vary Track
    - Smiths Road
  - Note road condition assessments are required before and after construction and any damage as a result of construction traffic will need to be made good



# Fire response capability

---



## Operational phase

- Wind Farm staff will be trained as first responders and will join the HVP CFA brigade
- All vehicles will have fire suppression equipment
- Increased fire breaks and contractual obligations to maintain these
- Increased operational activity in the plantation will be a deterrent to arsonists
- Cameras on turbines will assist in early detection
- All turbines will be equipped with lighting rods





# Community Benefits Program

---



- Neighbour Profit Sharing delivering approximately \$500,000 per annum directly to the neighbourhood area
- Community Development Fund offering approximately \$150,000 per annum (\$750 per MW installed)
  - Predevelopment fund of \$10,000pa until construction commences
- Community Co-investment initiative providing the opportunity for the community to invest in the project





---

# Questions



[www.osmi.com.au](http://www.osmi.com.au)

[contactus@osmi.com.au](mailto:contactus@osmi.com.au)

1800 OSMIAU